



27th NSW VAULTING CHAMPIONSHIPS 2022



**SYDNEY INTERNATIONAL EQUESTRIAN CENTRE
Saxony Road, Horsley Park, NSW 2175**

SATURDAY 11th to SUNDAY 12th JUNE, 2022

Organising Committee: Vaulting NSW

Run under current Australian Vaulting Rules

<https://www.equestrian.org.au/vaulting-rules>

- ENTRIES:** Entries Open: **Friday 22nd April 2022**
Entries Close: **Sunday 15th May 2022**
Nominate Website <https://www.nominate.com.au>
- ENTRY FEES:** Listed as per the schedule, plus a Nominate processing fee of 5.5%.
Administration Levy (includes First Aid Levy): \$85 per vaulter.
New horse/lunger details to be submitted via the '**Club Pre-Entry**' on
Nominate - opens midnight **Friday 15th April 2022**
LATE ENTRY FEE - \$50 up until Thursday 19th May
- REFUNDS:** Class refunds will only be considered after the close of entries
accompanied by Doctor's and/or Veterinarian's Certificate. The
administration levy will be retained by the organising committee.
- ENQUIRIES:** Kerrie Stapleton - kerrie.stapleton@bigpond.com
Gillian Burns - thevet@iig.com.au

SIEC - DOG POLICY – all dogs must be held on a lead at all times

The Organizing Committee reserves the right to change or alter any part of the program

CLASSES OFFERED

Class #	EA M'ship Level	INDIVIDUAL CLASSES	ENTRY PER PERSON
1	C	OPEN INDIVIDUAL --- FEMALE	100.00
2	C	OPEN INDIVIDUAL --- MALE	100.00
3	C	ADVANCED INDIVIDUAL - FEMALE	75.00
4	C	ADVANCED INDIVIDUAL - MALE	75.00
5	C	INTERMEDIATE INDIVIDUAL	70.00
6	C	NOVICE INDIVIDUAL	60.00
7	P	PRE-NOVICE INDIVIDUAL	60.00
8	P	PRELIMINARY INDIVIDUAL	55.00
9	P	INTRODUCTORY PRELIMINARY COMPULSORIES	35.00
10	P	INTRODUCTORY PRELIMINARY FREESTYLE	35.00
11	P	LUNGERS CLASS --- CANTER	30.00
12	P	LUNGERS CLASS --- WALK	30.00
13	P	HORSE DEVELOPMENT CLASS	50.00
Class # EA M'ship Level PAS DE DEUX CLASSES			
14	C	OPEN PAS DE DEUX	35.00
15	C	INTERMEDIATE PAS DE DEUX	35.00
16	P	PRELIMINARY A – PAS DE DEUX	30.00
17	P	PRELIMINARY B – PAS DE DEUX	30.00
18	P	PRELIMINARY D – INTEGRATED with AWD VAULTER	30.00
Class # EA M'ship Level SQUAD CLASSES			
19C	C	SQUAD – OPEN Compulsories	30.00
20C	C	SQUAD – ADVANCED Compulsories	30.00
20F	C	SQUAD – OPEN/ADVANCED Freestyle	30.00
21C	C	SQUAD – NOVICE Compulsories	30.00
22C	P	SQUAD – PRELIMINARY Compulsories	30.00
22F	P	SQUAD – NOVICE/PRELIMINARY Freestyle	30.00
23	P	SQUAD - PRELIMINARY Compulsories INTEGRATED with AWD VAULTER	30.00
Class # EA M'ship Level BARREL CLASSES			
24	P	INDIVIDUAL BARREL Open / Advanced	30.00
25	P	INDIVIDUAL BARREL Novice / Intermediate	30.00
26	P	INDIVIDUAL BARREL Prelim / PreNovice	30.00
27	P	PAS DE DEUX BARREL A	30.00
28	P	PAS DE DEUX BARREL B	30.00
29	P	PAS DE DEUX BARREL INTEGRATED with AWD VAULTER	30.00
30	P	BARREL SQUAD	20.00

EA MEMBERSHIP LEVELS: C – COMPETITOR P - PARTICIPANT

SIEC - DOG POLICY – all dogs must be held on a lead at all times

The Organizing Committee reserves the right to change or alter any part of the program



CONDITIONS FOR CLASSES

- Vaulters may enter one of each of the following:
 - Individual Horse
 - Pas de Deux Horse
 - Pas de Deux Barrel
 - Horse Squad Compulsories
 - Horse Squad Freestyle
 - Barrel Squad
- **Open Individual class:** include all 3 Open Tests which are averaged for the final score.
- **Advanced Individual classes:** will be run over TWO rounds for this event.
 - First round compulsories & freestyle will be split.
 - Second round will be Freestyle only.
- **Intermediate Individual classes:** will be run as a split round for this event.
- **Preliminary Introductory Classes:** are for vaulters who are relatively new to the sport and would like the choice of competing in Compulsories, or Freestyle or both.
- **Squads:** Two reserves may be nominated and entered in the competition via Nominate.
- **Squad reserve MUST be declared at the Team Managers Meeting.**
- All other classes will be run over one round.
- Vaulting is an **Inclusive sport**.
 - All vaulters with a disability are encouraged to compete in the class that they feel most comfortable.
 - Athletes with a disability will need to indicate where appropriate on the Nominate entry to be considered for the AWD prizes, which will be awarded within each age group.
- Athletes with a disability need to indicate on the Nominate entry form to be considered for the AWD perpetual award.
- The Organising Committee reserves the right to split classes that are oversubscribed. The draw for each split class will be determined through a random allocation of vaulters entered/horse welfare will be considered.
- **Preliminary Pas de Deux A Classes:** are for combinations previously scoring 6.0 or higher
- **Preliminary Pas de Deux B Classes:** are for combinations previously scoring up to 6.0.
- **New Pas de Deux** combinations to start in the level best suited to their ability.

SIEC - DOG POLICY – all dogs must be held on a lead at all times

The Organizing Committee reserves the right to change or alter any part of the program

HORSE DEVELOPMENT AND LUNGER CLASSES:

- **Lungers Class:**
- (Canter or Walk classes are available) Lungers must nominate the horse to be lunged.
 - Admin Levy will apply to Lungers in this class.
 - Horse points for Canter Class will be 1 point.
 - Horse points for Walk Class will be 0.5 point.
 - Judging will be based on the horse score component of FEI/AVR rules (A3 score sheet will be used)
 - Lunger must enter, salute, put the horse on a circle, trot a circle then walk or canter (depending on class entered) the horse for one minute, halt, salute and then exit. The timing commences after the completion of the trot circle.
 - Lungers may have a person run in to assist with the whip.
- **Horse Development Class:**
 - One (1) Horse point will be allocated for this class, per day.
 - Open to all horses, however no places are awarded.
 - Max. of 3 minutes to be allocated for each horse.
 - Horses are required to show a minimum of 2 gaits with or without a vaulter.
 - Judged with scores and comments, but no placings.

NOMINATE - 2 Entry Processes

- **Club Pre-Entry:**
 - **This system is to register a new club, squad, horse and lunger details with Nominate and must be submitted prior to Nominate opening for Vaulter entries.**
 - Adjustments & additions to horses & lunger information
 - Adjustments & additions to squad and club names
 - If you **are not** entering as a competitor and wish to receive competition information via email please register here (team managers, lungers, volunteers not already entered)
 - No money transfer will be necessary
 - Please allow 48 hours for horse details to be added to the database for vaulters to select when placing their entries.
- **Vaulter Entry:**
 - This is the usual entry for vaulters to enter classes and select horse and lunger combinations via Nominate.

Any further questions about Nominate entries can be directed to - sabine.osmotherly@gmail.com

SIEC - DOG POLICY – all dogs must be held on a lead at all times

The Organizing Committee reserves the right to change or alter any part of the program

STATE AWARDS:

The Organizing Committee would like to express appreciation to ENSW for its continued support.

Eligibility:

VNSW welcomes participation by Interstate vaulters. Interstate vaulters will receive class placing awards but only ENSW members will be eligible for State Champion awards.

Prizes:

- Medallions for 1st place in all horse classes
- Ribbons 2nd to 6th place for all horse classes
- Ribbons 1st to 6th place for barrel classes
- Ribbons 1st to 3rd for lungers in all classes

VAULTER AWARDS:

Individual Awards:

State Champion Individual Trophies will be awarded to the highest placed NSW vaulter from the highest individual class in the following age groups.

- Under 13 years
- 13 years to 17 years
- 18 years and over

State AWD Champion Individual Trophies will be awarded to the highest placed NSW vaulter from the highest individual class in the following age groups.

- Under 13 years
- 13 years to 17 years
- 18 years and over

Pas De Deux Award:

- *This award will be based on the vaulter scores from the official classes.*
- Pas De Deux state champions will be the NSW combination that has the highest score from the highest **Competitor** class - Intermediate or Open.

Squad Award:

- *This award will be based on the vaulter scores from the official classes.*
- Squad state champions will be the NSW squad that has the highest score from the **Compulsories** from the highest **Competitor** class – Open, Advanced or Novice.

A small token will be provided to each vaulter as recognition of their participation.

Age Awards – Competitor age is as per 1st day of competition.

SIEC - DOG POLICY – all dogs must be held on a lead at all times

The Organizing Committee reserves the right to change or alter any part of the program

HORSE & LUNGER COMBINATION AWARDS:

Best Individual Vaulting Horse & Lungler Combination of the Championships:

The best NSW Individual Vaulting Horse & Lungler Combination of the Championships receives a rug donated by Equestrian NSW.

Criteria for this award:

- This award will be based on horse scores from the Intermediate, Advanced and Open Individual classes.
- It will be awarded to the highest final horse score achieved by a NSW combination.
- In order to achieve a 'final horse score' the horse scores for specific Individual vaulters are averaged to give a 'final horse score' (i.e. on a per Individual vaulter basis).

Best NSW Pdd Horse & Lungler Combination of the Championships:

The Best PDD Horse & Lungler Combination of the Championships receives a trophy.

Criteria for this award:

- This award will be based on the horse scores from the **Competitor classes**.
- It will be awarded to the highest final horse score achieved by a NSW combination.
- In order to achieve a 'final horse score' the horse scores for specific Pas De Deux are averaged to give a 'final horse score' (i.e. on a per Pdd basis).

Best Squad Horse & Lungler Combination of the Championships:

The best NSW Squad Horse & Lungler Combination of the Championships receives a trophy.

Criteria for this award:

- This award will be based on the horse scores from the **Competitor classes**.
- It will be awarded to the highest final horse score achieved by a NSW combination.
- In order to achieve a 'final horse score' the horse scores for specific Squads are averaged to give a 'final horse score' (i.e. on a per Squad basis).

Scores: Scores will be posted as soon as possible after the class has been completed. Any queries must be submitted by the Team Manager to the Event Secretary.

The score sheets will be handed to the Team Manager for each Club at the conclusion of the event.

During the event the only people allowed to view score sheets are the judges. The final results will be forwarded to each Club within 48 hours of the conclusion of the Championships.

Presentation of Awards

- Presentation of ribbons will take place at the end of each day's competition.
- Presentation of Perpetual Awards will take place at the completion of the event.
- Club tracksuits or suitable attire is required for all presentations.

SIEC - DOG POLICY – all dogs must be held on a lead at all times

The Organizing Committee reserves the right to change or alter any part of the program

HORSE INFORMATION:

Horse Registration:

- All horses competing at the State Championships MUST to be registered with EA.
- Original Horse Registration papers must be provided at the Team Managers meeting and will be retained for the duration of the event.

Horse Points:

- Horse points as per Article 4. - Australian Vaulting Rules 2022

Arena Familiarization:

- Time will be made available prior to the event for a familiarization visit for all competitors and horses.

Practice Arenas:

Arena 11 – For use on Friday from 2pm for all competitors bumped into the event

Arena 6 – The practice arena outside the main arena will be available between sunrise & sunset, from Saturday.

Swabbing:

- Vaulters and Lungers refer to the current EA Australian Anti-Doping Policy.
- Horses refer to the current EA Equine Anti -Doping and Controlled Medication Regulations.
- Drug testing and swabbing - It is compulsory that swabbing is carried out on horses for State Championships by a qualified veterinary surgeon. Refer EA National Medication Control System at www.equestrian.org.au
- EA Equine Anti-Doping and Controlled Medication Regulations - [Equestrian Australia](http://www.equestrian.org.au)
- EA Australian Anti-Doping Policy - [Equestrian Australia](http://www.equestrian.org.au)

PLEASE NOTE:

The Secretary Office must be notified prior to any horses leaving the venue during the event.

SIEC - DOG POLICY – all dogs must be held on a lead at all times

The Organizing Committee reserves the right to change or alter any part of the program

GENERAL INFORMATION:

EA Membership

- Lungers & Vaulters are required to hold current EA membership – Competitive VS Participant.
- Refer [EA State Membership Structure](#)

Competitor Numbers

- Will be available for collection by club managers at the ShowOffice.
- A refundable deposit of \$20 per vaulter is required, either by cash or cheques in a marked envelope.
- Squads are to supply their own competitor numbers.

Refund Policy

- Class refunds will only be considered after the close of entries accompanied by Doctor's and/or Veterinarian's Certificate, at the discretion of the Organising Committee.
- The Administration Levy will be retained by the Organising Committee.
- **No** refund on stables after one week prior to event.

A Photographer and Videographer will be in attendance.

Photography: Rodney's Photography - www.RodneysPhotography.com.au

Video: Owen Marsh will be covering this competition, and DVD's will be available.

Media Consent

By entering these State Championships competitors agree to:

- Filming taking place and photos being taken and that their image may be used in approved media.
- Scores being publicly available.

First Aid

- **Highlands First Aid** will be covering this event - www.highlandfirstaid.com.au

SIEC - DOG POLICY – all dogs must be held on a lead at all times

The Organizing Committee reserves the right to change or alter any part of the program

STABLING AND CAMPING:

Stabling:

- Stables are available at \$35 per day with an additional \$75 payable for the first day to cover the cost of the 5 bales of shavings included in the stable hire.
- Additional bales are available at \$15 per bale. If required, the additional bales will be placed in the appropriate stable(s).
- Stable Bond: Refundable equipment and cleaning bond of \$100 per stable required.
- Stables will be allocated after receipt of entries. On leaving the stable, you will need to obtain an inspection to be eligible for your bond refund, which you will receive via Nominate.
- Please bring your own wheelbarrows, rakes and brooms.
- There are lockable tack rooms available in the stable block at \$20 per day.

Day Parking:

- For any horses not using the stables (e.g. floating on a daily basis and tethering the horse to the float) there will be a 'per day stay' charge of \$20 per horse per day.
- Enter via Nominate if applicable. Please indicate the number of horses on a per day stay on the appropriate days.
- Trucks and floats not staying overnight (day parking) need to park in P7 - check SIEC website for plan of site.

Camping:

- Camping for a powered site will cost \$35 per night/day.
- If additional power is required (using 2 outlets from one pole) an additional site fee of \$35 per night is required.
- When booking a camp site via Nominate, please indicate whether you need space for a truck/float/caravan/tent as this makes allocation of sites easier.
- If hiring a caravan, please indicate on entry form so that site can be allocated and the lessor advised of the site number for delivery purposes.

Cabins on site:

- Forty two **twin share cabins** are available for hire at SIEC. Cost \$50 per cabin per night. Supply your own linen, pillows & blankets, as this is not provided. The ablution block is close by.
- Bookings for cabins are made via Nominate, on a first come first served basis. You will be advised at time of entry if cabins are no longer available.
- No cooking is allowed in the cabins. These facilities are available in the Mess Hall close by.
- There will be a refundable bond of \$50 per cabin which will be refunded after the cabin has been checked by the campsite manager that it has been left clean and tidy and the key is returned.
- Refunds will be via Nominate post event.

SIEC - DOG POLICY – all dogs must be held on a lead at all times

The Organizing Committee reserves the right to change or alter any part of the program

Alternative Accommodation:

Caravan rental: Local caravan rentals are:

- Potts Caravans: 02 4774 8119
- Dolphin Caravan Hire: 02 4572 7176
- Parravans: 02 4577 5577

It is suggested that those wishing to hire a caravan book early. Those bringing caravans on site will need to book a site via Nominate.

Motels/Hotels:

There are plenty of options for accommodation, from budget motels through to luxurious 4* hotels in nearby Parramatta. Some of the Motels/Hotels available in the near vicinity are below (or check website for more options).

- Alpha Eastern Creek Motel - approx. 15min from SIEC - Ph: 02 8889 7700
- Novotel Sydney, Rooty Hill - approx. 15 min from SIEC - Ph: 02 9832 3888
- Travelodge Blacktown - Ph: 02 8822 2000
- Sebel Parramatta - Ph: 02 9630 4999
- Rydges Parramatta - Ph: 02 8863 7600

Caravan Parks:

- Fairfield West Caravan Park - 02 9604 8981

Canteen and Meals

- Mandavilla will have the Indoor Arena canteen operating all weekend for breakfast, lunch and dinner. A coffee van will also operate on the concourse. Breakfast will be available each morning.

Vaulters Reference Panel Meeting

- A VRP meeting will take place at a time and place to be decided.

SIEC - DOG POLICY – all dogs must be held on a lead at all times

The Organizing Committee reserves the right to change or alter any part of the program

Merchandise

- Various items of merchandise will be available for sale via [Nominate](#).
- Limited merchandise will also be available for purchase at the event.



27th Vaulting NSW State Championships (2022)
OFFICIAL MERCHANDISE

T-shirts & Jackets
Limited production (25 of each only)
"First in - Best dressed"

100% Cotton Pique Polo Shirt
\$60

Puffa Vests
\$80

Poly/Cotton Fleecy Hooded Jacket
\$90

Beanie
\$18

Socks
\$15

Microfibre Towel
\$15

Java Cup
\$12

Pre-Order via Nominate *Only Socks, Beanies, Java Cups & Towels available to purchase at event.*

SIEC - DOG POLICY – all dogs must be held on a lead at all times

The Organizing Committee reserves the right to change or alter any part of the program



Volunteers:

- It is expected that vaulters will provide helpers to assist with setting up and dismantling the arena, pencilers, time-keepers, announcers, gear stewards, runners, sales of merchandise, raffle tickets, etc.
- Provide names of volunteers/helpers on the Nominate entry form when it is completed as the **competition is only as successful as the volunteers provided**. Please note volunteer provided within nominate cannot be your coach or lunger.
- New helpers are strongly encouraged to assist as training will be provided and it gives an insight into the running of the competition.

CODE OF CONDUCT

- Vaulters and officials must observe the [EA Code of Conduct](#)
- Competition etiquette should be observed at all times.
- Officials, coaches, lungers and spectators to set their mobile phones to silent mode.
- All children must be under the supervision of an adult. If this person leaves the grounds, alternative supervision must be arranged.
- All clubs are responsible for ensuring that the property of SIEC Arena and other parties is respected and are liable for any damage caused.
- Competitors must comply with any instruction given by officials and/or organisers of the event.
- SIEC Arena has a strict dog policy – dogs must be on a lead at all times.
- Unsportsmanlike behaviour will not be tolerated from competitors or spectators, volunteers or officials.

SIEC - DOG POLICY – all dogs must be held on a lead at all times

The Organizing Committee reserves the right to change or alter any part of the program

HOW TO USE NOMINATE ENTRY SYSTEM

Entries via Nominate Website www.nominate.com.au For assistance Phone: (07) 3118 9555

Competitors are responsible for entering the correct classes. Prior to starting the entry process identify the classes to enter and confirm with your club as to what horse and lunger you will be using. This information needs to be correct for the draw.

Once you have selected the correct event, scroll to the bottom of the page for the competition.

<https://www.nominate.com.au/events>

Click the button "Click Here to Enter":

- Nominate will prompt you to fill in any required fields. Once completed the first page "Competition Entry Form" you will click next to go to stage 2.
- Competition Entry Stage 2 will require you to select the first class to enter then select the horse/lunger combination from the dropdown list.
- To add enter more classes click "Add Horse / Class" button. Once entered all classes click "Next" and this will take you to confirmation page and payments. If you have entered a squad or pas de deux you will be asked additional questions.

Correcting Errors after Payment has been made to Nominate

Refunds are available until the closing date for incorrect classes entered. If you have entered and paid for a class incorrectly, i.e. selected the wrong class or selected the wrong horse/lunger combination and have finalised the payment, then you will need to contact Nominate and request a refund for the incorrect entry. You will then need to enter the class correctly. To avoid paying the Admin Levy a second time you will need to enter the "Previous Invoice Number" on the Competition Entry Form. Your Previous Invoice Number will be found on your copy of the receipt that you will have been emailed. Continue with placing the correct entry ensuring class number and horse and lunger details are correct.

Correcting Errors after Closing Date

After the closing date, if you need to make a correction you will need to obtain a password from Nominate to avoid paying the late fee. Enter the password and tick the box for the discount and the late fee will not be charged. Any new entries during the late period will incur the late fee.

Any changes after final close of the event will need to be made manually on the draw and may incur a \$10 fee to paid prior to arm numbers being provided.

Contact: Kerrie Stapleton - kerrie.stapleton@bigpond.com
sabine.osmotherly@gmail.com

SIEC - DOG POLICY – all dogs must be held on a lead at all times

The Organizing Committee reserves the right to change or alter any part of the program

MUSIC SUBMISSION & INFORMATION

Please share all music with the Music Coordinator - nswvaultingmusic@gmail.com
One Dropbox folder should be provided by each club or group - by **Monday 30th May**.

The Team Manager or a nominated person from each club/competitor is to share their music Dropbox. This person will be the contact person for music and will be contacted if there are any problems or questions.

1. Each file must be clearly **labelled as follows**:

- a. Individual competitors: "Club, Surname, First initial, Grade, Compulsories or Freestyle"
- b. Pas de Deux: " Club, both Surnames, Horse, Grade"
- c. Squad: "Club, Squad name, Grade, Compulsories or Freestyle"
- d. Where the club uses compulsory music for everyone using a particular horse: "Club Name, Horse's Name, Class"
- e. Run in music: "Club name, Run in"
- f. Individuals with their own run in: "Last name, classes in which this will be used" example: Smith, Run in Ind &/or Pdd)

*When there are siblings competing please **always** include first initial to avoid confusion

** **A single folder** containing all the correctly labelled music (i.e. no sub folders)

2. CD's, emails or USB sticks are not correct forms of delivery and will **NOT** be accepted. Alternative arrangements will only be made in exceptional circumstances.

3. **MP3 format is REQUIRED** and is the only format that will be accepted. Volume control on other file formats may be limited and can affect the music during the competition. The club's team manager will be notified if a file format is not acceptable. The music compiler **will not** amend incorrectly formatted files.

4. A **final check** to ensure all the music has been received cannot be done until the final draw has been distributed. Clubs / individuals are responsible for keeping their own list of the music they need and what has been sent through.

5. It is essential that all clubs / individuals **bring a copy** of all music in MP3 format on a flash drive to the event in case a file has been mislaid or corrupted during the sending process.

6. If music is not put in the Dropbox and is subsequently not supplied after an additional request, a generic music file may be used for the competitor.

7. Prior to the commencement of the event, Team Managers will receive a full list of any vaulters with no music.

Any questions or concerns, please contact... nswvaultingmusic@gmail.com

SIEC - DOG POLICY – all dogs must be held on a lead at all times

The Organizing Committee reserves the right to change or alter any part of the program

ORGANISING COMMITTEE AND OFFICIALS

Organising Committee:	Vaulting NSW	
Competition Secretary:	Kerrie Stapleton	
President of Ground Jury:	TBA	
Judges:	Robyn Bruderer, Jenny Scott, Janet Leadbeater, Emily Leadbeater, Tristyn Lowe (TBC)	
Appeals:	As per EA Vaulting Rules 2022	
Chief Steward:	Sarah Jones	
Assistant Steward:	Rebecca Higgins/Noelene Davis	
Marshall:	TBA	
Scoring Team:	VNSW Scoring Team	
Swabbing Steward:	ENSW	
Music Coordinator:	Grant O'Hare	
PA:	TBA	
Nominate Coordinator:	Sabine Osmotherly	
Vets:	Randwick Equine Clinic	9399 7722
Medical Services:	Cecil Hills Medical Centre	9822 9111
Farrier:	Local area farriers as noted below	
First Aid:	Highlands First Aid	
Music Check:	TBA	
Chef's Meeting:	TBA	

SIEC - DOG POLICY – all dogs must be held on a lead at all times

The Organizing Committee reserves the right to change or alter any part of the program

SIEC'S RULES AND EVENT CONDUCT:

THERE IS A TOTAL FIRE BAN which includes cigarettes, smoking anywhere in the National Park Area which SIEC is part of is prohibited.

NO ALCOHOL IS ALLOWED IN THE STABLE COMPOUND.

Bicycles:

- Bicycles and scooters may be brought on to the grounds but are not permitted in the Stabling compound.
- Helmets **MUST** be worn whilst riding bikes and scooters.
- Bikes and scooters are not to be used in or around the Indoor Arena area.

Internal Roads:

- The internal roads of SIEC are PUBLIC roads so we are bound by NSW traffic rules and regulations – eg. Seat belts to be worn.
- Neither the Organising Committee nor the EA accepts responsibility for any accident relating to the use of motorised vehicles on the grounds at any time.

Horses: NO horses are allowed in the camping area and/or truck/float parking area.

SIEC COVID: Information can be found <https://www.sport.nsw.gov.au/covid-19-information#oos-venues>

SIEC - DOG POLICY – all dogs must be held on a lead at all times

The Organizing Committee reserves the right to change or alter any part of the program

NEARBY FACILITIES INFORMATION

Shopping Centres		
IGA Supermarket	8-12 Horsley Road, Horsley Park	02 9620 2001
Wetherill Park Shopping Centre	Stocklands, 561-583 Polding Street, Wetherill Park	02 9609 7766
Westfield Liverpool	Macquarie Street, Liverpool	02 9602 6633
Laundry Services		
Blacktown Laundrette	24 Flushcombe Road, Blacktown	02 9622 3494
Express Laundry	7 Orcam Lane, Rooty Hill	02 9678 4403
Fairfield Laundry	46 Hamilton Road, Fairfield	02 9727 4494
Family Laundry Service	16 Hillcrest Road, Quakers Hill	0433 552 210
Ricks Washhouse Laundrette	89 Ware Street, Fairfield	02 9724 4579
Liverpool Laundromat Coin Op	345 Macquarie Street, Liverpool	02 9822 4583
Petrol		
BP	1642 The Horsley Drive, Horsley Park	02 9620 1289
Independent	Cnr Horsley Drive and Wallgrove Road, Horsley Park	02 9601 1294
Medical Centres		
Cecil Hills Medical Centre	Shop 11/1 Lancaster Ave, Cecil Hills	02 9822 9111
Fairfield District Hospital	Cnr Polding Street and Prairievale Road	02 9616 8111
Horsley Park Medical Centre	Shop 2/1818 Horsley Drive	02 9620 2880
Liverpool Hospital	Elizabeth Street, Liverpool	02 9828 3000
Transport		
Taxi	South Western Cabs	13 27 88
Taxi	Premier Cabs	13 10 17
Airport Shuttle Service		
Hoang Do Airport Transfer		02 9728 9080
Airport Shuttle Service, Pacific		02 9786 6494
Oz Better Shuttle		0400 201 593
Western Airport Services		02 9755 9080
Buggy Hire		
Golf Cart World	157 Church Street, Ryde	02 9877 5550
Kennards Hire	256 Toongabbie Road, Girraween	02 9896 7485
Patons Event Hire	Mullins Road, Penrith	1800 2844 437
General		
Joe's Test and Tag Mobile Unit		0418 862 550
Vet		
Agnes Banks Equine Clinic	5 Prince Lane, Agnes Banks	02 4588 5200
Hawkesbury Equine Clinic	226 Hawkesbury Valley Way, Clarendon	02 4577 4611
Randwick Equine Clinic	373-379 Wallgrove Road, Horsley Park	02 9399 7722
University of Western Sydney	Werombi Road, Camden	02 4655 0777
Warwick Farm Equine Centre	10 Bull Street, Warwick Farm	02 9601 3444
Wollondilly Equine	170 Russell Lane, Oakdale	02 4659 7322
Farrier		
Aaron Baker		0431 526 843
Aaron Dowling		0447 272 166
Andrew Atkins		0403 541 671
Anton		0429 377 797
Frank		0432 371 587
Matt Scotts		0420 211 711
Michael Morris		0412 508 757
Randy Porter		0425 804 956
Produce Supplier		
Bringelly Stockfeed	395 Devonshire Road, Kemps Creek	0429 206 372
Camden Rossmore Stockfeed	Cnr Bringelly Road, North Street, Rossmore	02 9606 7477
Macarthur Stock Feeds	1640 Camden Valley Way, Leppington	02 9606 5427
Sydney Equestrian Supplies	5 Post Office Road, Ebenezer	02 4579 9265
Saddlery		
Horseland	8/8 Maxwell Place, Narellan	02 4647 7717
Horse N Around	Cnr Northern Road and Littlefields Road, Mulgoa	02 4773 4169
Saddleworld	9/69 York Road, Penrith	02 4722 2441

SIEC - DOG POLICY – all dogs must be held on a lead at all times

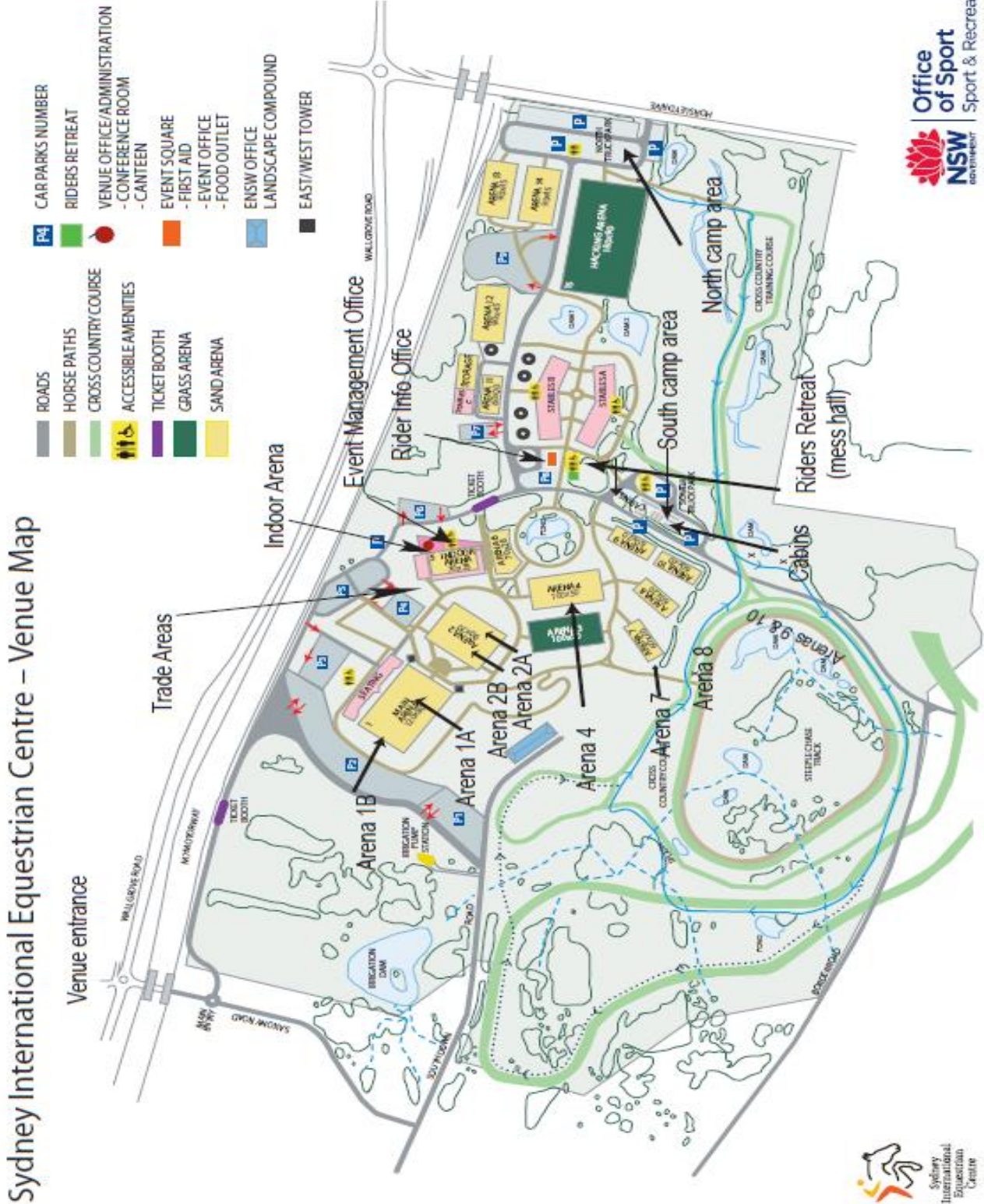
NEARBY FACILITIES INFORMATION

Accommodation		
Avina Vineyard	217 Commercial Road, Vineyard	02 9627 1847
Alpha Hotel	Corner of Braham and Peter Brock Drive, Eastern Creek	02 8889 7700
Atura Blacktown	32 Cricketers Arms Road, Prospect	02 9421 0000
Blacktown Travelodge	Reservoir Road, Blacktown	02 8822 2000
Blue Cattle Dog Motel	Mamre Rd (cnr Banks Rd), St Clair	02 9670 3050
Chifley Hotel	Mulgoa Road, Penrith	02 4721 7700
Ibis Budget	437 Hume Highway, Casula	02 9822 2777
Ibis Budget	377-383 Great Western Highway, Wentworthville	02 9789 1240
Hunts Motor Inn	Corner Hume Highway and York Streets, Casula	02 9601 5088
Mercure Hotel	424-458 Hoxton Park Road, Liverpool	02 8777 0600
Novotel	33 Railway Street, Rooty Hill	02 9832 3888
Quest Serviced Apartments	1 Rennie Road, Woodbine	02 4622 4900
Rydges	Old Menangle Road, Campbelltown	02 4645 0500
St Marys Park View Motel	465 Great Western Highway, St Marys	02 9623 1227
Voyager Motel	863 Great Western Highway, Minchinbury	02 9625 9902
Caravan Parks		
Fairfield West Caravan Park	320 Polding Street, Fairfield	02 9604 8981
Ingenia Holidays Nepean River	91/95 Mackellar Street, Emu Plains	02 4735 4425
Poplar Caravan Park	21 Macarthur Road, Camden	02 4658 0485
Sydney Gateway Holiday Park	30 Majestic Drive, Parklea	02 8814 4222
Caravan Hire		
Camplify	www.camplify.com.au	
Discovery Caravan Hire		0413 455 161
Dolphin Caravan Hire	146 Macpherson Road, Londonderry	02 4572 7176
Great Escape Caravan Hire	Castlereagh	0450 211 171
Parravans	38-40 Mileham Street, Windsor	02 4577 5577
Axle Avan Camplify	leisa@pnc.com.au	
Potts	44 Dwyer Road, Bringelly	02 4774 8119
Entertainment and Recreation		
Calmsley Hill City Farm	31 Darling Street, Abbotsbury	02 9823 3222
Featherdale Wildlife City Farm	217-229 Kildare Road, Blacktown	02 9622 1644
Kemps Creek Bowling Club	Elizabeth Drive, Kemps Creek	02 9826 1375
Liverpool Catholic Club	Cnr Joadja and Hoxton Park Roads, Liverpool West	02 8784 4878
Panthers World of Entertainment	Mulgoa Road, Penrith	02 4720 5555
Rooty Hill RSL	Sherbrooke Street, Rooty Hill	02 9625 5500
Restaurants		
Hunts Motel Seafood Restaurant	Hume Highway, Liverpool	02 9601 5088
Il Piatto	Wallgrove Road, Horsley Park	02 9620 2166
Lucky Thai and Lao	Shop 3, 134 Edensor Road, St John's Park	02 8786 1997
Pho 76	581/ 586 Polding Street, Stocklands	02 9604 7776
Royal Cricketers Arms	Watch House and Reservoir Roads, Prospect	02 9622 6498
Savanas	Stockland Mall, Polding Street, Wetherill Park	02 9757 3767
Cafes		
Blue Star	565 Polding Street, Stockland Shopping Centre	02 9609 7270
Havana Café	Kiosk 2/1183 The Horsley Dr, Wetherill Park	02 9729 2836
Kiosk One	The Greenway Centre, 1183 The Horsley Drive	02 9757 3611
La Royale Patisserie	9a/1183-1187 The Horsley Drive, Wetherill Park	02 9604 4008
Rosetti's	27/1024 The Horsley Drive, Wetherill Park	02 9756 5560
The Horsley Park Delicatessen	1844 The Horsley Drive	02 9620 2077
Vero	Shop 3, 1822 The Horsley Drive, Horsley Park	02 9620 2585
Take Away		
Big Chiefs	Cnr Wallgrove Road and Horsley Drive	02 9620 1209
Domino's	The Greenway Centre, 1183 The Horsley Drive	02 9756 6474
Subway	The Greenway Centre, 1183 The Horsley Drive	02 9725 2033
Thai Central	The Greenway Centre, 1183 The Horsley Drive	02 9757 3611

SIEC - DOG POLICY – all dogs must be held on a lead at all times

The Organizing Committee reserves the right to change or alter any part of the program

CABLE TV COORREL



SIEC - DOG POLICY – all dogs must be held on a lead at all times

The Organizing Committee reserves the right to change or alter any part of the program